

Company	Phone
Address	Mobile (of the contact person)
ZIP Code; City	Fax
Country	E-mail
Contact person	VAT no. / Registration no.

Order by fax: +40 21 207 70 70
E-mail: ttr@romexpo.ro

ORDER: RENTING ELECTRICAL INSTALLATIONS

We order according with the items checked below and, we also accept the Special Conditions in the Application Contract and the General & Technical Conditions of the Fairs and Exhibitions organized within ROMEXPO Exhibition Centre.

Code	Quantity	Description	Tariff (EURO)
Electrical equipment - Stand built with ROMEXPO			
019 010 180 000		Arm spotlight	18
019 010 181 000		Arm spotlight 100W	18
019 010 187 000		Connecting spotlight OCTANORM	18
019 010 200 008		Spotlight SS30 100W	18
019 010 188 000		Spotlight 100W	18
019 010 170 000		Spotlight 100W	18
019 010 185 000		Halogen spotlight SY STAR 100W	21
019 010 186 000		Halogen spotlight SY STAR 50W(A)	21
019 010 200 010		Arm reflector 300W	45
019 010 200 006		Halogen reflector SYMA STAR 300W	45
019 010 200 005		IVEN HQI 150W reflector	45
019 010 390 000		HIGHLITE HQI 150W reflector	45
019 010 200 030		HQI 80W reflector	45
019 010 200 020		PAR64 500-1000W reflector	50
019 010 200 040		Arm reflector LED A++ 16W 1100LM 4000K	45
019 010 200 045		LED VIRGO reflector 40W 4350 LM 4100K	50
019 010 110 000		Fluorescent lamp FIA with complete electric installation 1x40W	21
019 010 190 001		Fluorescent lighting SS30 type with D-170-A tube	24
019 010 190 000		Fluorescent lighting SS30 type with D-170 tube	21
019 010 200 001		Fluorescent lighting SYMA STAR type	24
019 010 200 000		Fluorescent lighting OCTANORM type with double-tube D-171	26
019 010 265 000		Electrical panel 380V/220V - electric board, 7 single phase circuits (without electric branching) - inside / outside*)	120
019 010 275 000		Electrical panel OCTANORM - electric board, 8 single phase circuits (without electric branching) - inside / outside*)	140
019 010 279 000		Extension cable 230V, 10A, 5m	15
019 010 277 000		Extension cable 230V, 10A, 3m	15
*)Please check the necessary electric branching too			
Electrical equipment - for any kind of stand			
025 010 070 010		Cooler 140 l (55x61x84 cm)	30
025 010 120 010		Coffee filter	8
025 010 130 030		DVD Player	50
025 010 130 040		Plasma display TV (diagonal screen: 107 cm)	31/day
025 010 130 045		TV LED SMART 4K, UHD ultrathin (diagonal screen: 126 cm)	50/day
025 010 130 047		TV SAMSUNG UHD (diagonal screen: 163 cm)	75/day
025 010 500 020		Standing fan	11
025 010 020 198		Refrigerator Arctic FB 155	31
025 010 020 199		Refrigerator Arctic 255 I	65
025 010 070 020		Refrigerator ARCTIC 180 I	54

Code	Quantity	Description	Tariff (EURO)
Electrical installations			
019 010 210 000	<input type="text"/>	Single phase power branching, including 1 single phase plug 2P+E 230V, 50 Hz (PI<=1,5 KW) - inside	42
019 010 210 010	<input type="text"/>	Single phase power branching, including 1 single phase plug 2P+E 230V, 50 Hz (PI<=1,5 KW) - outside	42
019 010 010 100	<input type="text"/>	Single phase power branching, including 1 single phase plug 2P+E 230V, 50 Hz (PI<=3 KW) - inside	68
019 010 010 110	<input type="text"/>	Single phase power branching, including 1 single phase plug 2P+E 230V, 50 Hz (PI<=3 KW) - outside	68
019 010 020 000	<input type="text"/>	Three phase power supply, including 1 three-phase socket CEE 16 A 5p 400V, consumption and checking installation (PI<= 5,0 KW) - inside	165
019 010 020 010	<input type="text"/>	Three phase power supply, including 1 three-phase socket CEE 16 A 5p 400V, consumption and checking installation (PI<= 5,0 KW) - outside	240
019 010 030 000	<input type="text"/>	Three phase power supply, including 1 three-phase socket CEE 16 A 5p 400V, consumption and checking installation (5 KW<PI<=8,0 KW) - inside	240
019 010 030 010	<input type="text"/>	Three phase power supply, including 1 three-phase socket CEE 16 A 5p 400V, consumption and checking installation (5 KW<PI<=8,0 KW) - outside	315
019 010 050 000	<input type="text"/>	Three phase power supply, including 1 three-phase socket CEE 32 A 5p 400 V, consumption and checking installation (5 KW<PI<=10,0 KW) - inside	330
019 010 050 010	<input type="text"/>	Three phase power supply, including 1 three-phase socket CEE 32 A 5p 400 V, consumption and checking installation (5 KW<PI<=10,0 KW) - outside	405
019 010 055 000	<input type="text"/>	Three phase power supply, including 1 three-phase socket CEE 32 A 5p 400 V, consumption and checking installation (10 KW<PI<=18,0 KW) - inside	540
019 010 055 010	<input type="text"/>	Three phase power supply, including 1 three-phase socket CEE 32 A 5p 400 V, consumption and checking installation (10 KW<PI<=18,0 KW) - outside	615
019 010 055 020	<input type="text"/>	Three phase power supply, including 1 three-phase socket CEE 63 A 5p 400 V, consumption and checking installation (18 KW<PI<=34,0 KW) - inside	840
019 010 055 030	<input type="text"/>	Three phase power supply, including 1 three-phase socket CEE 63 A 5p 400 V, consumption and checking installation (18 KW<PI<=34,0 KW) - outside	915
019 010 055 040	<input type="text"/>	Three phase power supply, including 1 three-phase socket CEE 125 A 5p 400 V, consumption and checking installation (34 KW<PI<=50,0 KW) - inside	990
019 010 055 050	<input type="text"/>	Three phase power supply, including 1 three-phase socket CEE 125 A 5p 400 V, consumption and checking installation (34 KW<PI<=50,0 KW) - outside	1065
019 010 055 060	<input type="text"/>	Three phase power supply, including 1 three-phase socket CEE 125 A 5p 400 V, consumption and checking installation (50 KW<PI<=75,0 KW) - inside	1485
019 010 055 070	<input type="text"/>	Three phase power supply, including 1 three-phase socket CEE 125 A 5p 400 V, consumption and checking installation (50 KW<PI<=75,0 KW) - outside	1560

To all tariffs VAT should be added.

Delivery date:

(fill in only for services which are ordered before starting the stand's mounting)

Order date

City

Exhibitor stamp and signature



Arm spotlight EUR 18.00
Code 019.010.180.000



Arm spotlight 100W EUR 18.00
Code 019.010.181.000



Connecting spotlight OCTANORM EUR 18.00
Code 019.010.187.000



Spotlight SS30 100W EUR 18.00
Code 019.010.200.008



Spotlight 100W EUR 18.00
Code 019.010.188.000



Spotlight 100W EUR 18.00
Code 019.010.170.000



Halogen spotlight SY STAR 100W EUR 21.00
Code 019.010.185.000



Halogen spotlight SY STAR 50W(A) EUR 21.00
Code 019.010.186.000



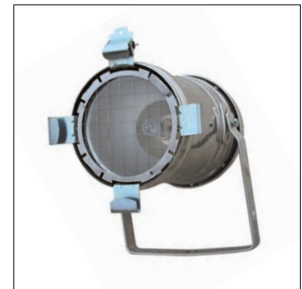
Arm reflector 300W EUR 45.00
Code 019.010.200.010



Halogen reflector SYMA STAR 300W EUR 45.00
Code 019.010.200.006



IVEN HQI 150W reflector EUR 45.00
Code 019.010.200.005



HIGHLITE HQI 150W reflector EUR 45.00
Code 019.010.390.000



HQI 80W reflector EUR 45.00
Code 019.010.200.030



PAR64 500-1000W reflector EUR 50.00
Code 019.010.200.020



Arm reflector LED A++ 16W 1100LM 4000K EUR 45.00
Code 019.010.200.040



LED VIRGO reflector 40W 4350 LM 4100 K EUR 50.00
Code 019.010.200.045

RENTING ELECTRICAL EQUIPMENT

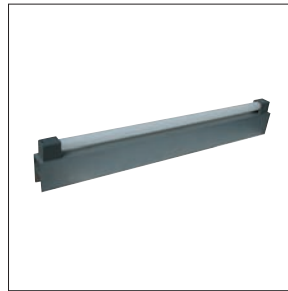
S6/5



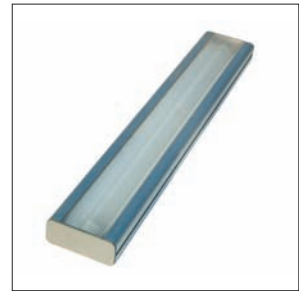
Fluorescent lamp FIA with complete electric installation 1x40W
Code 019.010.110.000
EUR 21.00



Fluorescent lighting SS30 type with D-170-A tube
Code 019.010.190.001
EUR 24.00



Fluorescent lighting SS30 type with D-170 tube
Code 019.010.190.000
EUR 21.00



Fluorescent lighting SYMA STAR type
Code 019.010.200.001
EUR 24.00



Fluorescent lighting OCTANORM type with double-tube D-171
Code 019.010.200.000
EUR 26.00



Electrical panel 380V/220V
Code 019.010.265.000
EUR 120.00



Electrical panel OCTANORM
Code 019.010.275.000
EUR 140.00



Extension cable 230V, 10A, 5m
Code 019.010.279.000
EUR 15.00



Extension cable 230V, 10A, 3m
Code 019.010.277.000
EUR 15.00



Standing fan
Code 025.010.500.020
EUR 11.00



Coffee maker
Code 025.010.120.010
EUR 8.00



DVD Player
Code 025 010 130 030
EUR 50.00



Plasma TV (diagonal screen: 107 cm)
Code 025 010 130 040
EUR 31.00/day



TV LED SMART 4K, UHD ultrathin (diagonal screen: 126 cm)
Code 025 010 130 045
EUR 50.00/day



TV SAMSUNG UHD (diagonal screen: 163 cm)
Code 025 010 130 047
EUR 75.00/day



Cooler (140 l)
Code 025.010.070.015 (55 x 61 x 84 cm)
EUR 31.00



Refrigerator ARCTIC 255 l
Code 025 010 020 199
EUR 65.00



Refrigerator ARCTIC FB 155
Code 025 010 020 198
EUR 31.00



Refrigerator ARCTIC (180 l)
Code 025 010 070 020
EUR 54.00

To all tariffs VAT should be added